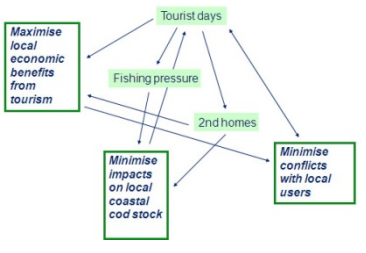


SSA 7.6 -THE SØNDELED FJORD SYSTEM

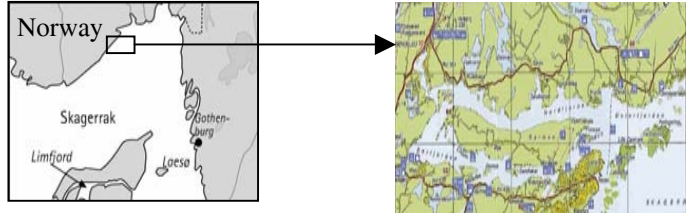
Erlend Moksness¹, Jakob Gjørseter¹, Eirik Mikkelsen², Espen Moland Olsen¹, Håkan T. Sandersen³ and Jon Helge Vølstad⁴
 1 - Institute of Marine Research, Flødevigen Marine Research Station, 4817 His, Norway
 2 - Norut AS, Postboks 6434 Forskningsparken, 9294 Tromsø, Norway
 3 - Bodø University College, Dep. Of social science, 8049 Bodø, Norway
 4 - Institute of Marine Research, 5817 Bergen, Norway

Policy issue & examples of links

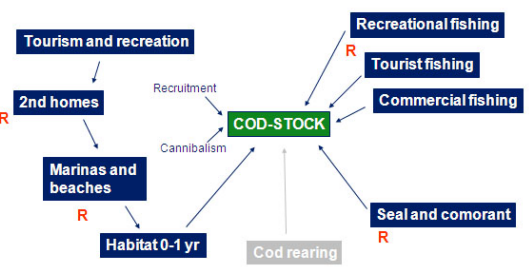


ExtendSim Model coding

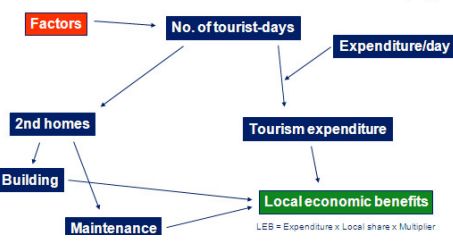
Guillaume Lagaille, 1point2, France



Factors affecting cod stock



Local economic benefits from tourism



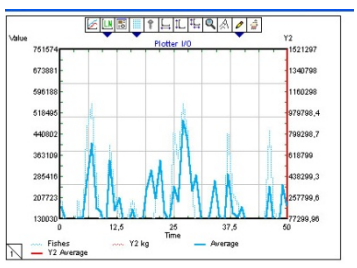
Tourist Categories:
 • Hotel-tourists
 • 2nd home owners
 • Fishing tourists
 • 2nd home renters
 • Camping-tourists

INPUT:

- Cod recruitment
- Seal and bird populations
- Tourist numbers by category
- Accommodation capacity
- Other user groups
- Regulations

OUTPUT:

- Status local cod population
- Local economic benefits
- Economic benefit by category
- Conflict indicator



Density (0+1 groups):	1843,6	Fishes / km2
BioMass (2-10 groups):	0,4311	Tons / km2
Commercial fishing:	0,2697	Tons / km2
Conflict factor:	15,99	
Local income:	103420000	NOK

The Policy Issue

Increase local economic benefits from tourism, while minimizing negative impacts on local coastal cod stock and conflicts with local users of the fjord system.

LOCAL COD REGULATION MODEL

Inputs: Environmental Components (NC), Social Components (SC), Economy Components (EC), Indicators.

Regulations: Tourist fisher accommodations, MPA Habitat, MPA Cod.

Outputs: Cod pop. history, Biomass history, Tourists history, Local benefit, Results.

NC COMPONENTS: demography, conflict, Local benefit, Tourist day.

SC & EC COMPONENTS: MPA Habitat, MPA Cod.

Legend: Predation (red), Harvest (blue), Stock Enhancement (green).